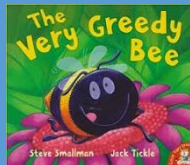
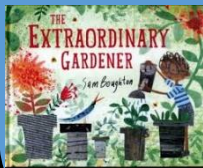
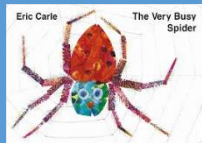
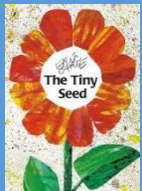




Year R

Key Texts



The Big Question-

What's alive in the garden?



Summer 2

Our big question this half term gives us the opportunity to explore outside in the summer sun.

We will look at all the things we can find the garden. We will explore different types of trees and plants. Learn how to grow grass and cress. We will begin to look at a variety of wildlife such as frogs, minibeasts and birds.

We will have a wonderful enrichment opportunity this half term with our first school trip to Bedfont lakes where we will have the chance to hold some minibeasts and go on a nature walk.

R.E

Our big question is...
What can we learn from stories? We will be looking stories from different religions. We will think about what key messages we can take from each one and how we can use this day to day.
The value this half term is thankfulness.

Personal, Social, Emotional Development-

This half term we will begin to support the children with their transition to year 1 and using the zones of regulation to help unpick those big feelings.

Communication & Language –

Use new vocabulary through the day.

Ask questions to find out more and to check they understand what has been said to them.

Physical Development-

Develop overall body-strength, balance, co-ordination and agility. Develop the foundations of a handwriting style which is fast, accurate and efficient.

Maths-

Automatically recall number bonds for numbers 0–5 and some to 10. Understand the 'one more than/one less than' relationship between consecutive numbers.

Literacy- Read simple phrases and sentences made up of words with known letter–sound correspondences and, where necessary, a few exception words. Re-read what they have written to check that it makes sense.

Understanding of the World- Understand the effect of changing seasons on the natural world around them. Recognise some environments that are different from the one in which they live. Plant seeds and care for growing plants. Understand the key features of the life cycle of a plant and an animal.

Expressive Art & Design- Explore, use and refine a variety of artistic effects to express their ideas and feelings.